



Analysing the impacts of socio-technical solutions for migrants' integration: a way to foster sustainability

Antonella Passani
DEN – Design Entrepreneurship Institute



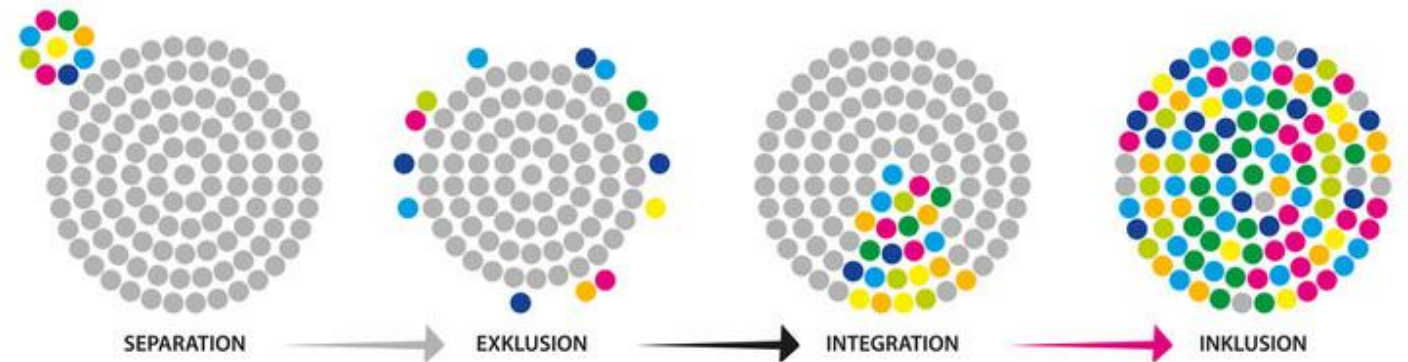
Talking about impact...

means answering questions such as:

- ✓ What is the difference a project makes?
- ✓ For whom?

Assessing the impact of socio-technical solutions for migrants' integration/inclusion

- *What is integration? How to measure it?*
- *What is the costs of non-integration?*
- *Direct and indirect impacts of socio-technical solutions*





Defining integration



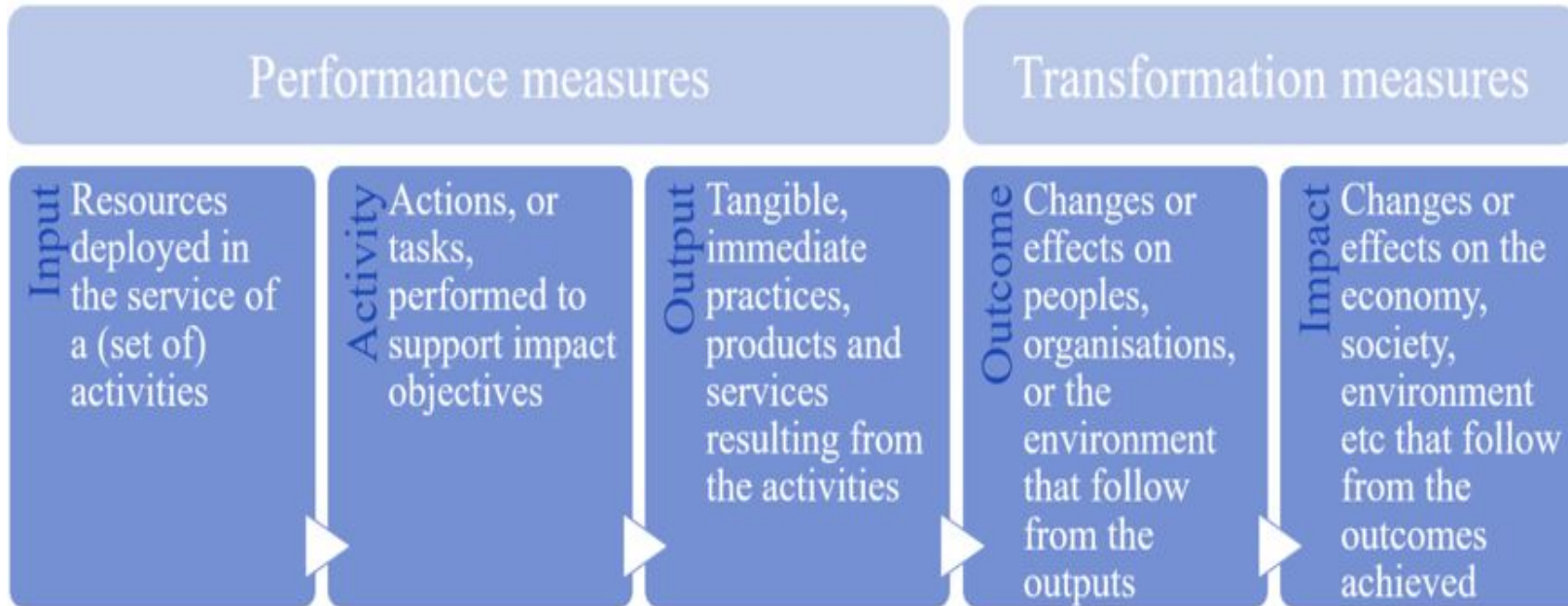
Ager and Strang, 2008

Integration is considered as the “degree to which immigrants **have the knowledge and capacity** to build a successful, fulfilling life in the host society”

Harder et al., 2018.



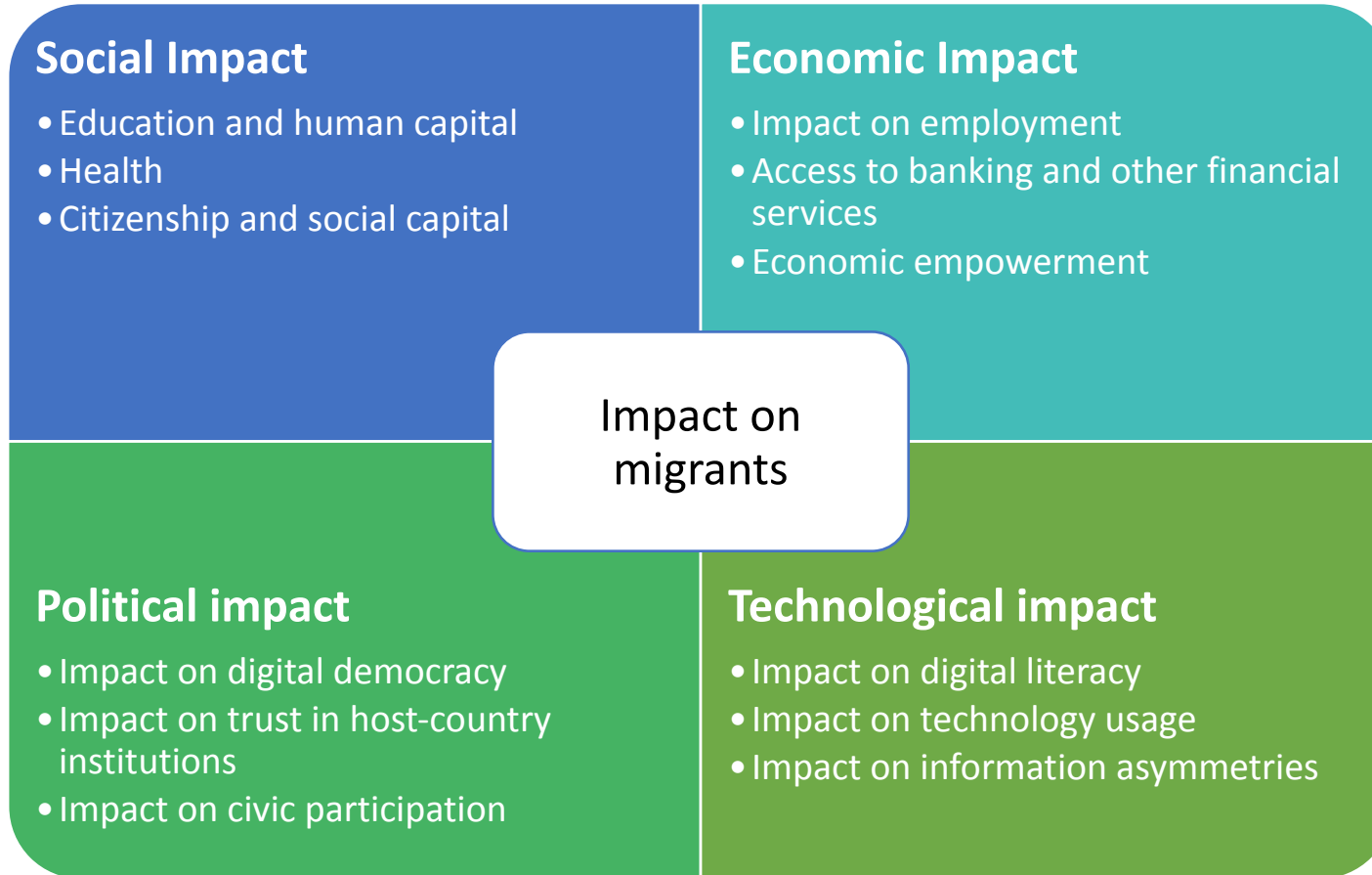
Impact value chain



REBUILD is expected to increase migrants' integration by *improving access to and increase effectiveness of* already-existing services. To this, REBUILD adds the provision of new online services by digitalising services that are currently run on a face-to-face basis only.



Impact on migrants





Impact on Local Service Providers and PAs

Social Impact

- Impact on workforce human capital
- Impact on collaboration and networking
- Impact on workforce working conditions

Economic Impact

- Impact on efficiency
- Impact on internal working routine & work processes
- Increment in accountability and transparency

Impact on LSPs
and PAs

Political impact

- Impact on policies
- Impact on institutions

Technological impact

- Impact on services' digitalisation
- Impact on access to information



The cost of non-integration

We considered the situation in Italy

The analysis shows that the costs for a migrant that is not properly integrated in the host society can be as high as 52,000 Euro per Year for a single person.

- ***What we considered?***
 - the unitary cost of unemployment benefit
 - health-related costs
 - the unitary cost of maintenance of each migrant convict calculated daily per year
 - We should add to this cost of educational failure and cost of discrimination



Contacts



Antonella Passani
a.passani@den-institute.org